

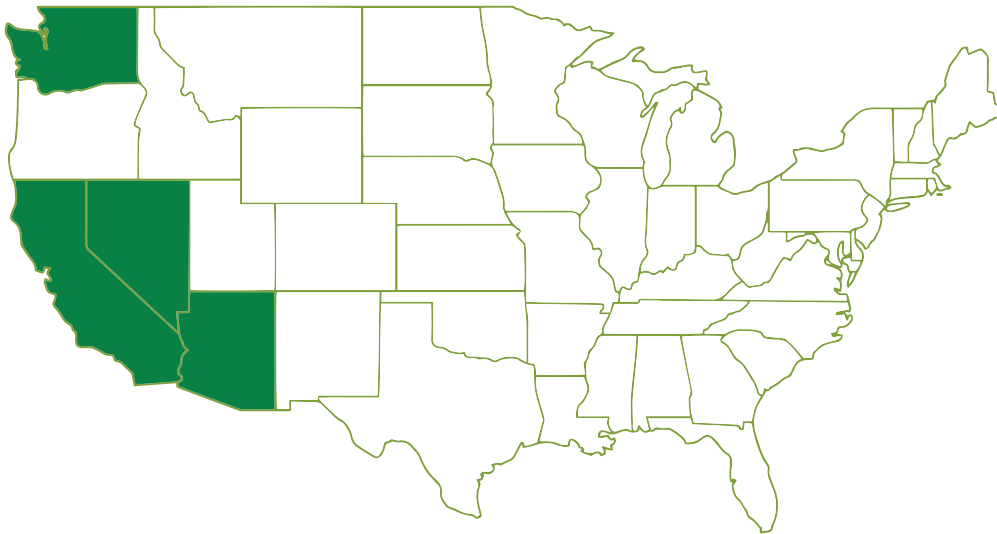


About us

As a premier commercial general contracting firm, Pacific Construction is dedicated to bringing their clients' construction visions to life.

Pacific Construction was founded by Wilson Yu in Northern California, in 2010. With over 20 years of construction experience, Wilson Yu set out to raise the bar in construction and management services in Northern California. Over the past decade, the company has amassed an impressive portfolio of projects, spanning a diverse range of commercial construction methods and types.

With a reputation for excellence and a commitment to quality, Pacific Construction is the go-to choice for businesses looking to make their mark in California, Washington, Nevada, and Arizona.

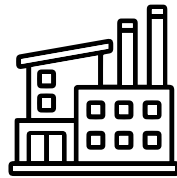


What We Build

We specialize in building commercial structures such as retail centers, industrial warehouses, educational facilities, medical clinics, fitness centers development projects and everything in-between.



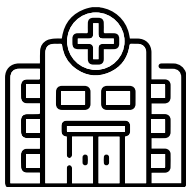
Retail



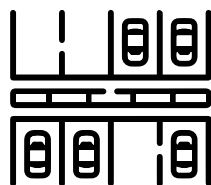
Industrial



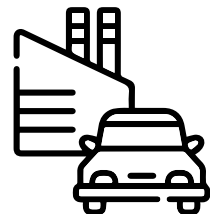
Educational



Medical



Site Development



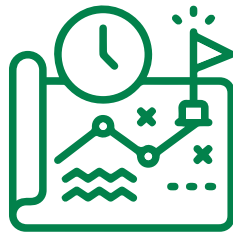
Automotive



Why work with us?

20+

Our team brings over 20 plus years of experience and continued education to each project.



We understand that every client and project are unique, and both deserve solutions customized to their needs.



Exceptional Project Managers who will communicate with you from beginning to completion.



Project: [5.11 Tactical](#) Location: [Manteca, CA](#)
Project Type: [Tenant Improvement](#) Size: [40,000 sqft](#)

5.11 Tactical was a 40,000 sqft tenant improvement office build-out completed inside a 400,000 sqft industrial tilt-up building. 5.11 Tactical combined their Modesto and Lathrop facilities into one operation in Manteca, CA. This project includes the build out of offices, conference rooms, work out area (Cross Fit Gym), lockers, showers, break rooms, shipping & receiving offices, custom print shop, and open office areas.





Project: [Calivines](#) Location: [Lodi, CA](#)
Project Type: [Ground-Up](#) Size: [12,170 sqft](#)

Calivines was a 12,170 sqft ground-up facility located in Lodi, California. It features a 2 story exterior metal facade, with interior build: office spaces, tasting room, club room, barrel room, kitchen, and production area.





Project: Audi San Francisco Location: San Francisco, CA
Project Type: Tenant Improvement Size: 20,040 sqft

Interior and exterior work was completed on the 20,040 sqft complex which included a multi-level showroom, office spaces, conference room, and retail space.





Project: Eve Zimmerman Tennis Center Clubhouse Location: Stockton, CA
Project Type: Ground-Up Size: 4,267 sqft

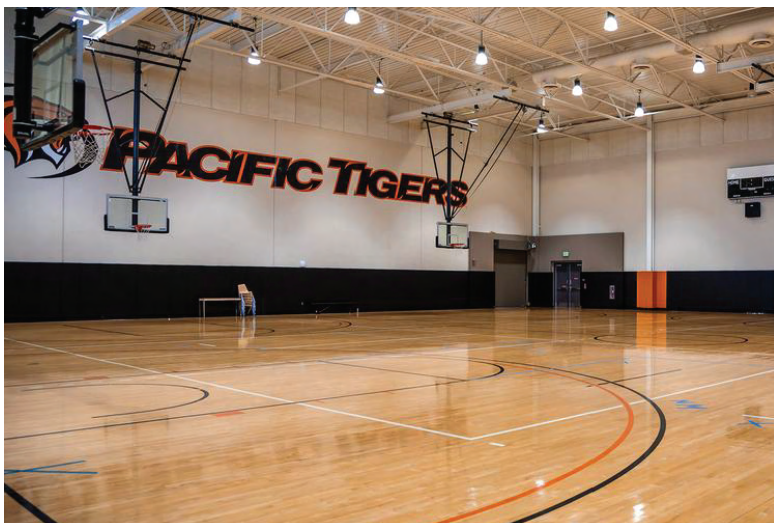
This project was a 4,267 sqft ground-up clubhouse and 3,300 sqft of site work. Construction of new building consisted of men's and women's team room, coaches' office, trainers' office, men's and women's shower facilities, restrooms, lounge, and healthy market.





Project: Janssen-Lagorio Gymnasium Location: Stockton, CA
Project Type: Ground-Up Addition Size: 2,861 sqft

This 2,861 sqft addition to the existing Janssen-Lagorio Multi Sports Gymnasium at the University of Pacific has a functional design that allows easy access to the basketball and volleyball courts. The scope of work featured a roll-up door that enables trainers to expand the space during training sessions as needed. The additional space is furnished with fitness equipment and free weights.





Project: [Patterson Family Pharmacy](#) Location: [Patterson, CA](#)
Project Type: [Ground-Up](#) Size: [5,246 sqft](#)

This 5,246 sqft pharmacy was a ground-up project located in the heart of downtown Patterson, CA. It's the pharmacy where the staff know their clients by name and treat them like family. The building has been designed in a way that is consistent with the overall architectural style of the town. Construction consisted of a wood-frame structure with a stucco exterior, tile roof, drive-thru window, and custom canopies. The building's interior has polished concrete floors, specialized pharmaceutical cabinetry, rustic finishes, an interior brick wall, and a uniquely shaped conference room. This location also contains a compounding room to produce custom medications.





Project: [Jiffy Lube](#) Location: [Tracy, CA](#)
Project Type: [Ground-Up](#) Size: [23,196 sqft](#)

This was a 4,000 sqft ground-up facility that included a 1,114 sqft pit located 9' below grade. New wood framed building that included new office, restrooms, customer lounge, employee breakroom, and four service bays. Finishes included paint, tile, acoustical ceiling, retroplate finished shop floor, millwork, storefront, and eight overhead shop doors. The oil service pit is cast in place concrete with vapor barrier to ensure pit was water tight. Onsite coordination with Jiffy Lube equipment provider was necessary to ensure proper placement of reinforcement, equipment anchors, and slab penetrations before setting structural steel and pouring concrete. This project also included site and landscaping work: grading, underground utilities, sand/oil separator, new paving, striping, and two bioretention areas.





Project: Amakara Sushi Location: Dublin, CA
Project Type: Tenant Improvement Size: 5,450 sqft

Amakara Sushi was a 5,450 sqft tenant improvement in a mixed-use building. Scope of work included construction of a new kitchen, scullery, main dining, casual dining, sushi bar, liquor bar, takeout area, and restrooms.





Project: Golden State Fire Apparatus Location: Sacramento, CA
Project Type: Tenant Improvement Size: 9,654 sqft

This 9,654 sqft tenant improvement was completed in two phases.

In the first phase, the 6,970 sqft first floor included the remodel of an existing restroom, a warehouse office, and a parts counter. In addition, site improvements included seal coating the existing exterior asphalt, striping, and the installation of a flag pole.

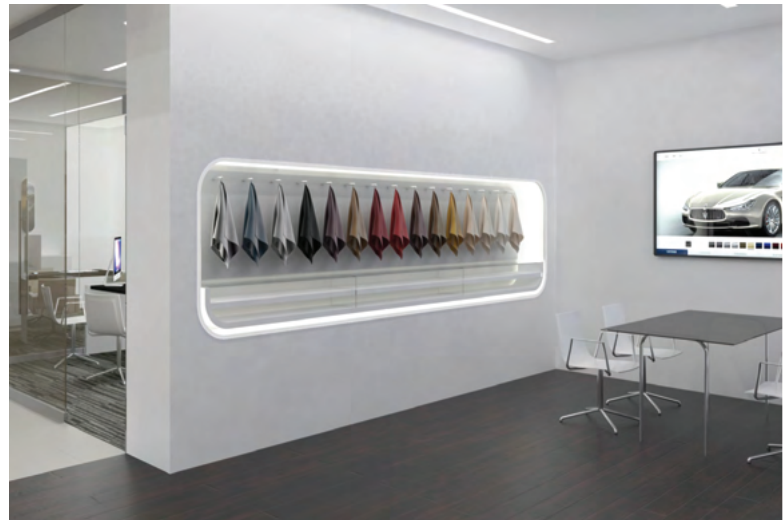
The second phase scope of work focused on the remodel of the 2,684 sqft second floor. Improvements included a conference room with new cabinetry, offices, a stone veneer accent wall, and signage.





Project: Maserati Location: Seaside, CA
Project Type: Ground-Up Addition Size: 12,435 sqft

This project was a 12,435 sqft building addition to an existing dealership. A showroom was constructed along with a Service Porte Cochere (covered entrance). New showroom areas for Maserati were created to include: a configuration room, sales office, private offices, customer lounge, breakroom, and restrooms. The showroom was designed per the latest Maserati branding scheme. The exterior of the addition area was finished with ACM (Aluminum Composite Material) panels and the new Porte Cochere was finished in stucco. The parking lot was reconfigured to incorporate additional stalls and new landscaping.





Project: [Marketplace at Weston Ranch](#) Location: [Stockton, CA](#)
Project Type: [Ground-Up and Site Development](#) Size: 4 Acres

This project was a four-acre ground-up site with retail spaces: Starbucks, 7-Eleven, and two pads for future tenants. Work included site development with new underground utilities. In addition to the construction of new buildings, the scope of work comprised of an asphalt parking lot, striping, landscaping, sidewalks, a masonry wall, and trash enclosures. Surrounding site work included new city sidewalk sections, road work, landscaping, and the installation of a traffic signal.





Project: Starbucks Location: Stockton, CA
Project Type: Ground-Up Size: 2,211 sqft

This 2,211 sqft building, constructed from the ground up, was equipped with a drive-thru and featured the only walk-up order window in the area. The scope of the work included all aspects of architectural and structural design, mechanical systems, electrical, plumbing, site accessibility, and underground civil engineering work.

Project: 7-Eleven
Location: Stockton, CA
Project Type: Ground-Up
Size: 3,060 sqft

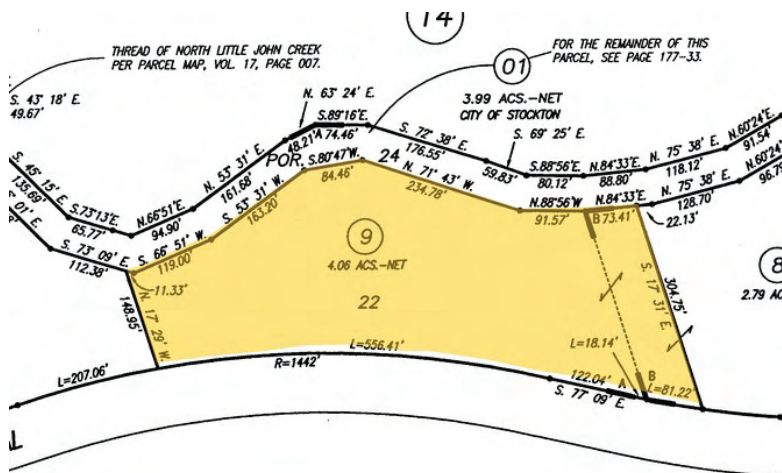


The construction of this 3,060 sqft store included electrical, plumbing, mechanical, and refrigeration service. In the store's interior, you will find polished concrete floors, tiled walls, paint, an acoustical ceiling, store fixtures, and equipment. The exterior work included stucco, paint, stone veneer, landscaping, canopies, trash enclosure, and parking lot striping. An outsourced 7-Eleven vendor, with coordination and oversight by Pacific Construction, completed the gas station work.



Project: 1549 Industrial Ave Location: Stockton, CA
 Project Type: Site Development Size: 4 Acres

This project was a 4-acre site development for a tractor-trailer parking lot facility. The site was constructed to slope towards the front of the property into a stormwater bioswale. Scope of work included fencing that matched the adjacent property, site lighting throughout the lot, and landscaping along the perimeter.



1,120

Completed projects.



Contact us for a **free consultation.**



(209) 477-2766



pac-construction.com



4125 S. B Street
Stockton, CA 95206



CA LIC # 959669
NV LIC # 84866

WA LIC # CC PACIFIC*84007
AZ LIC # ROC # 343330

www.pac-construction.com